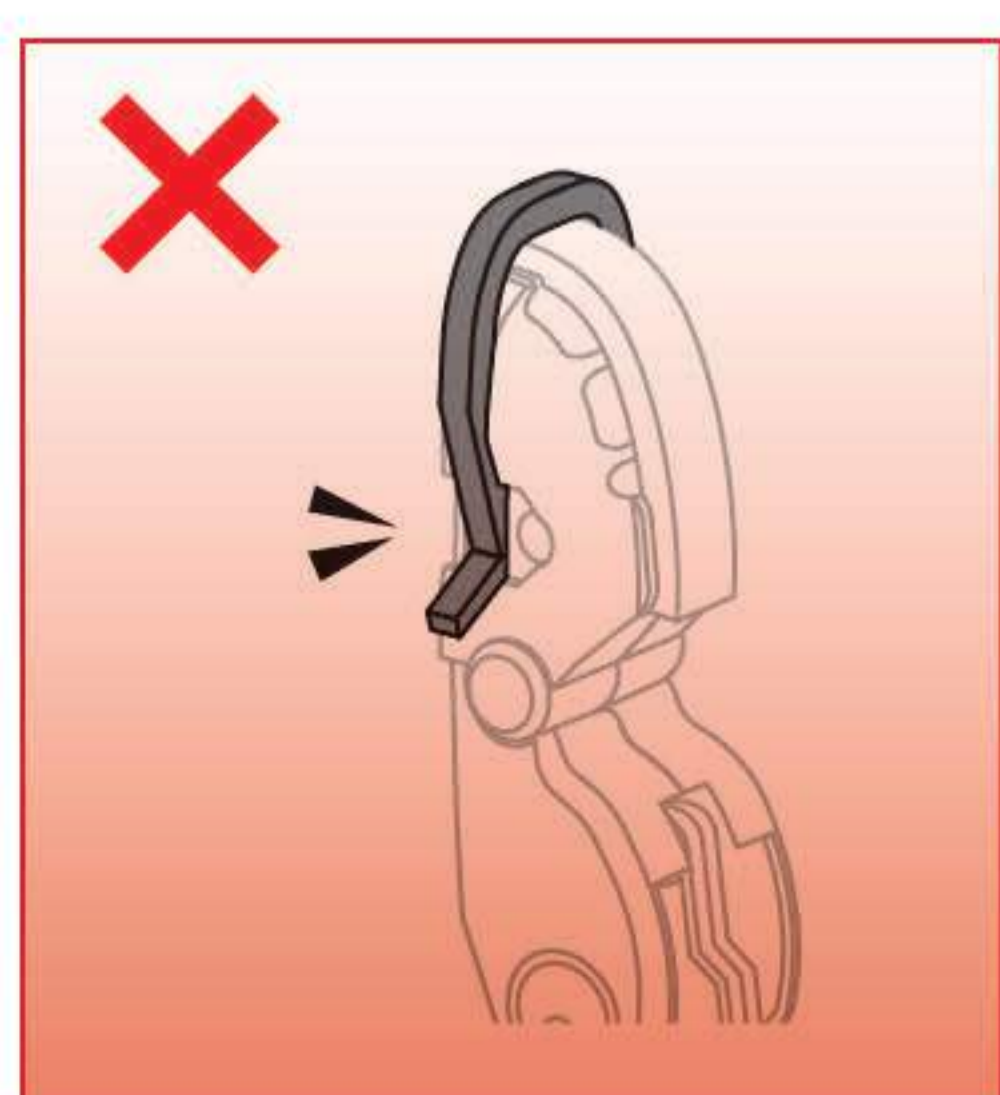
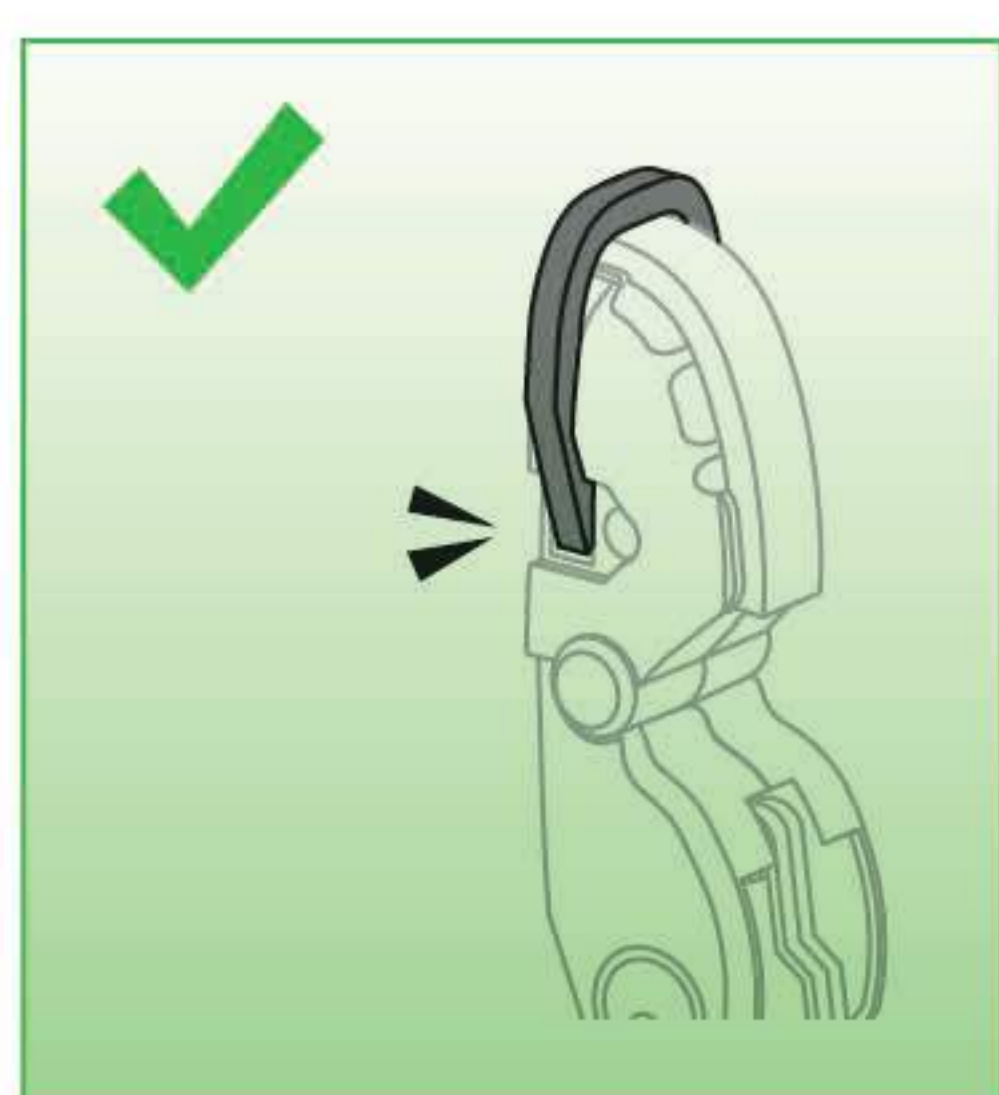
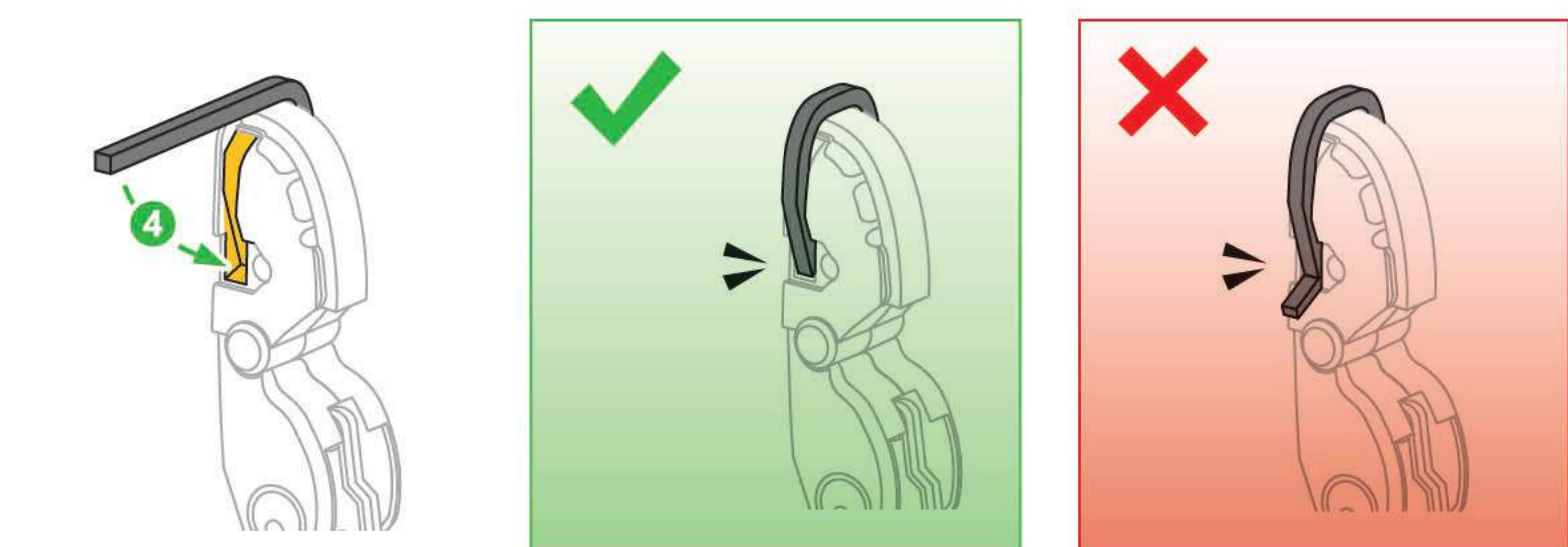
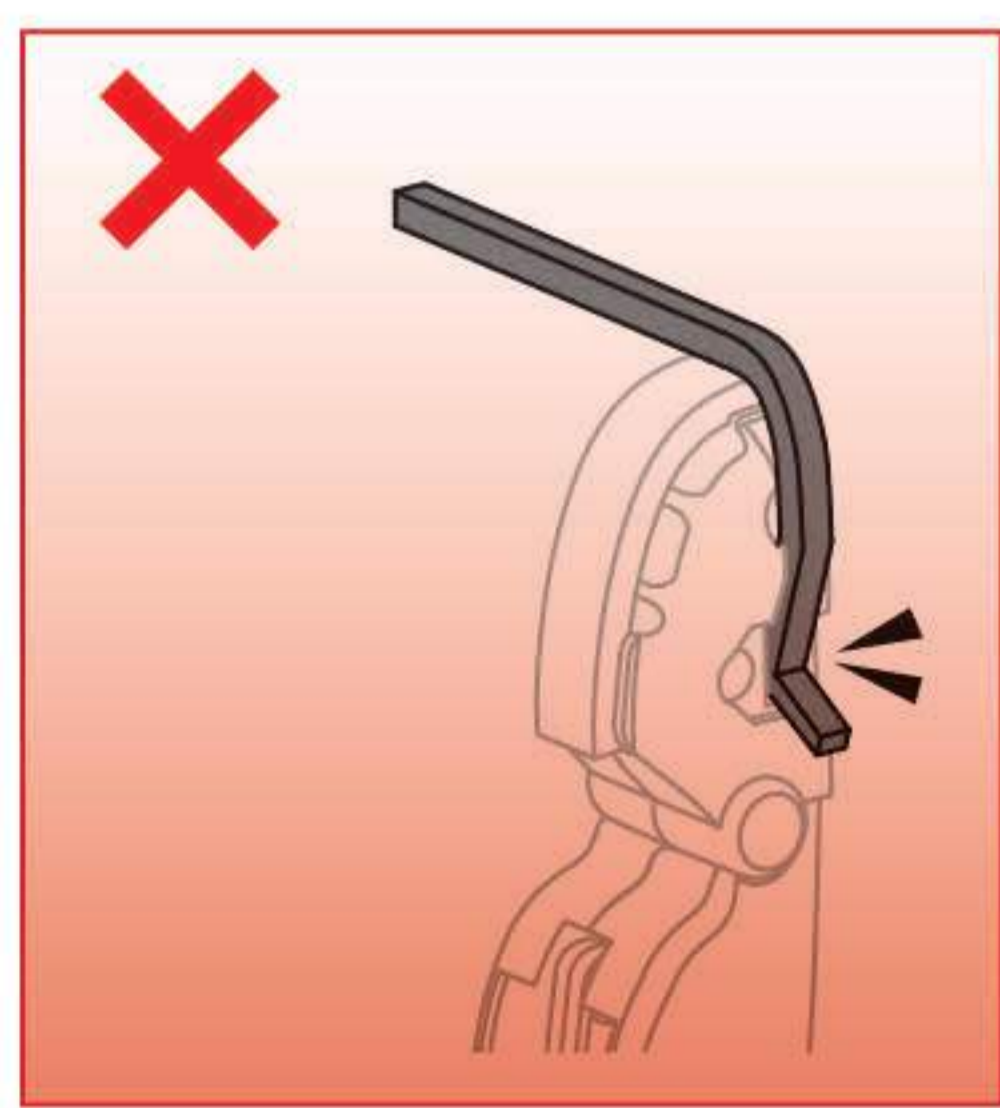
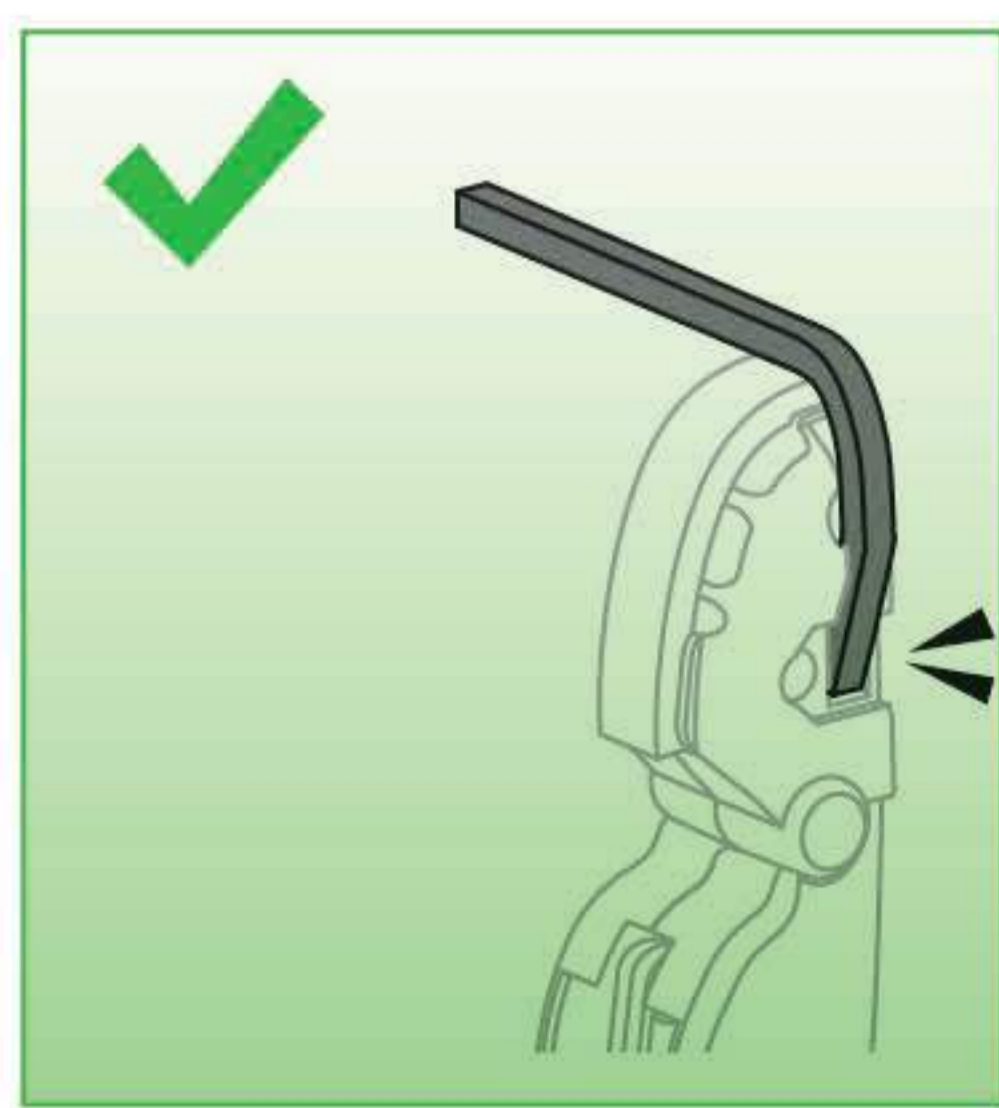
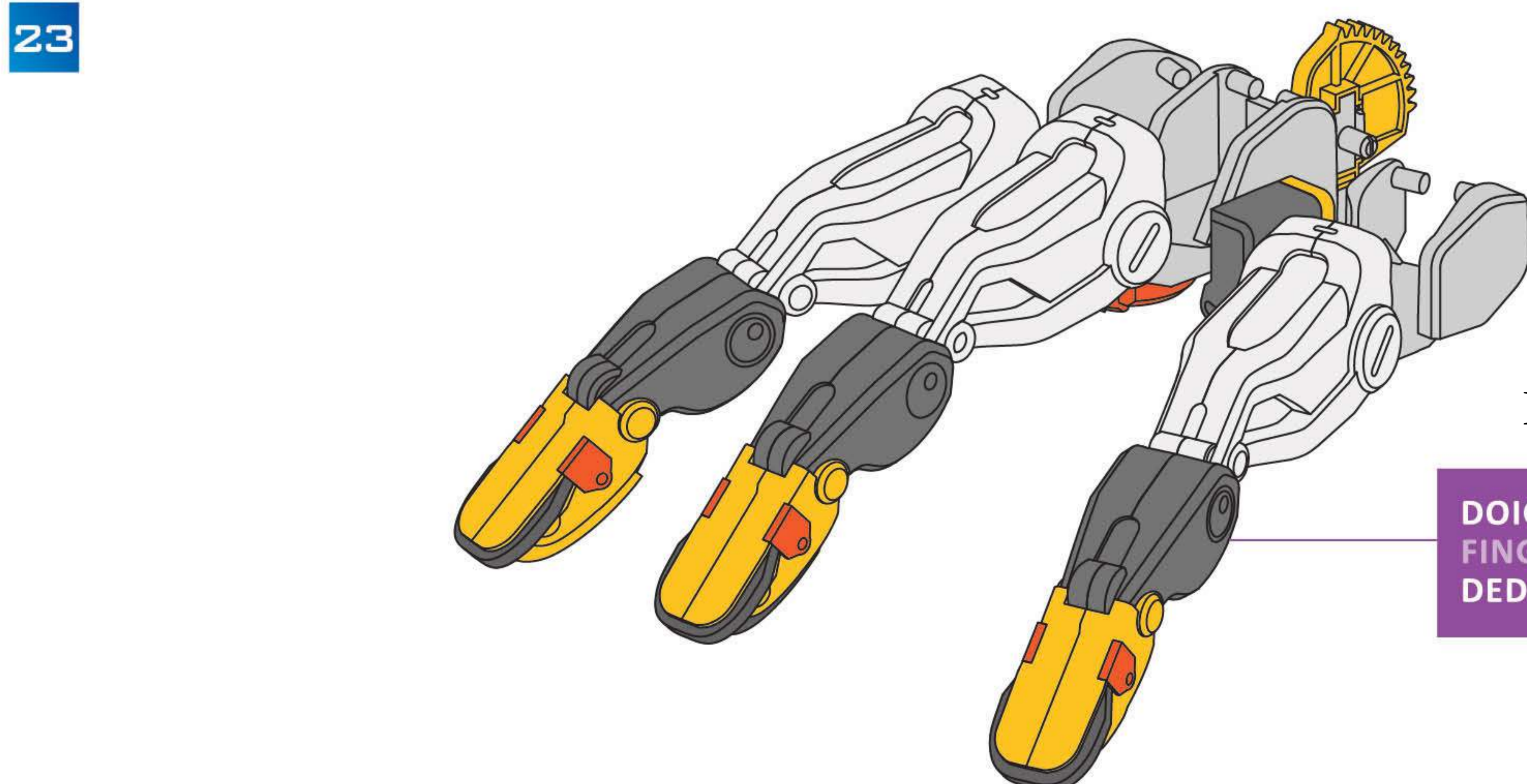
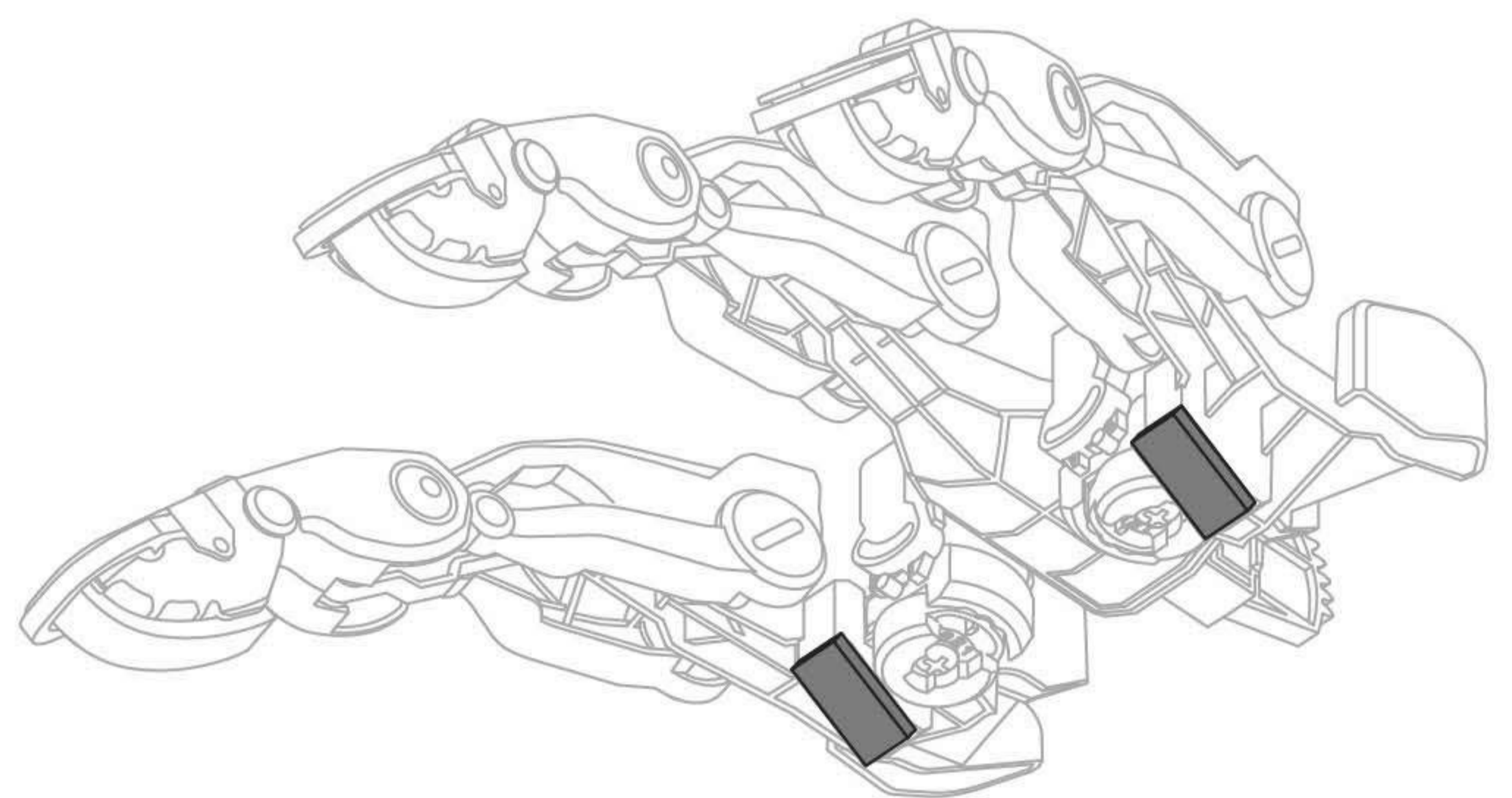
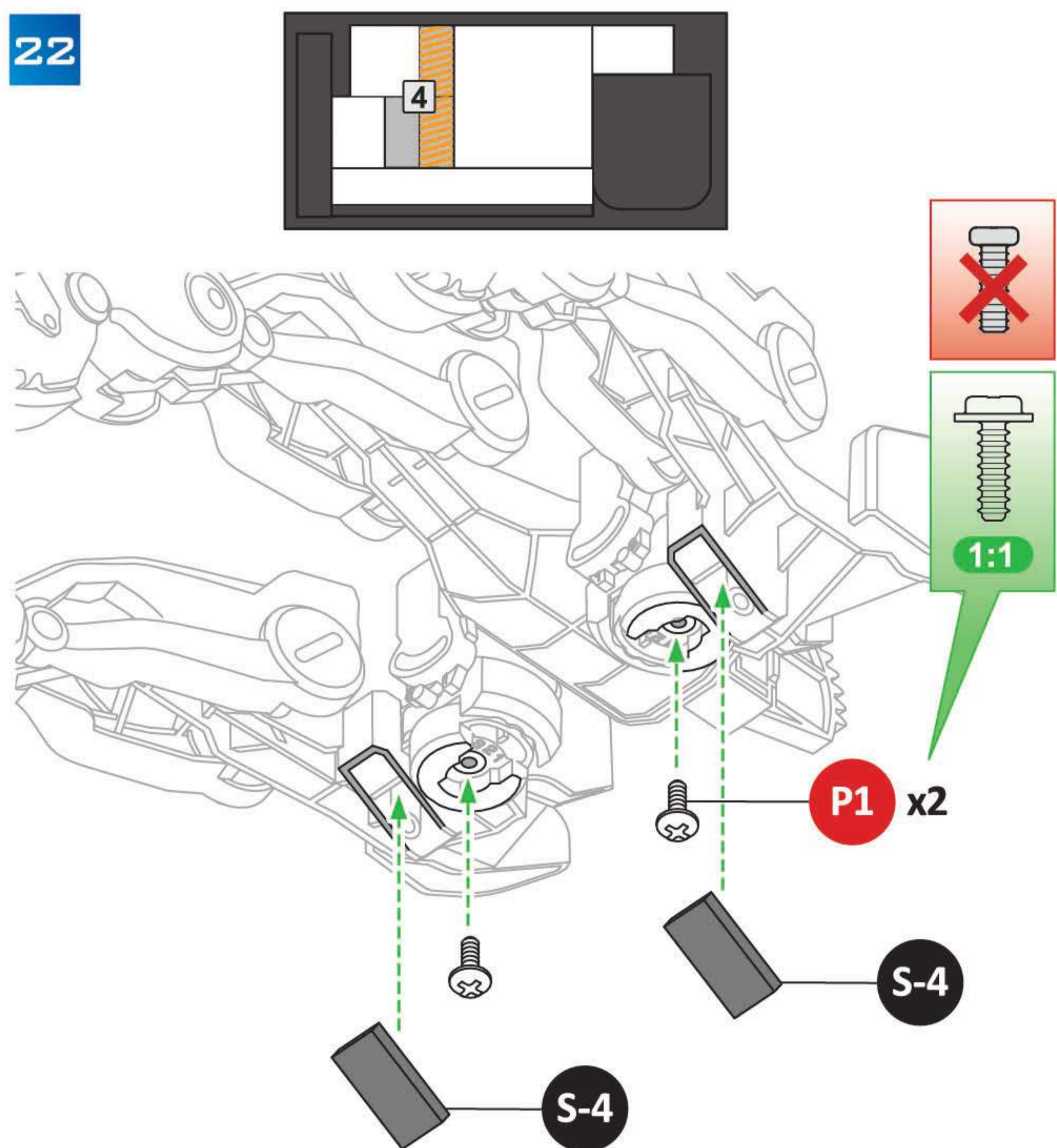
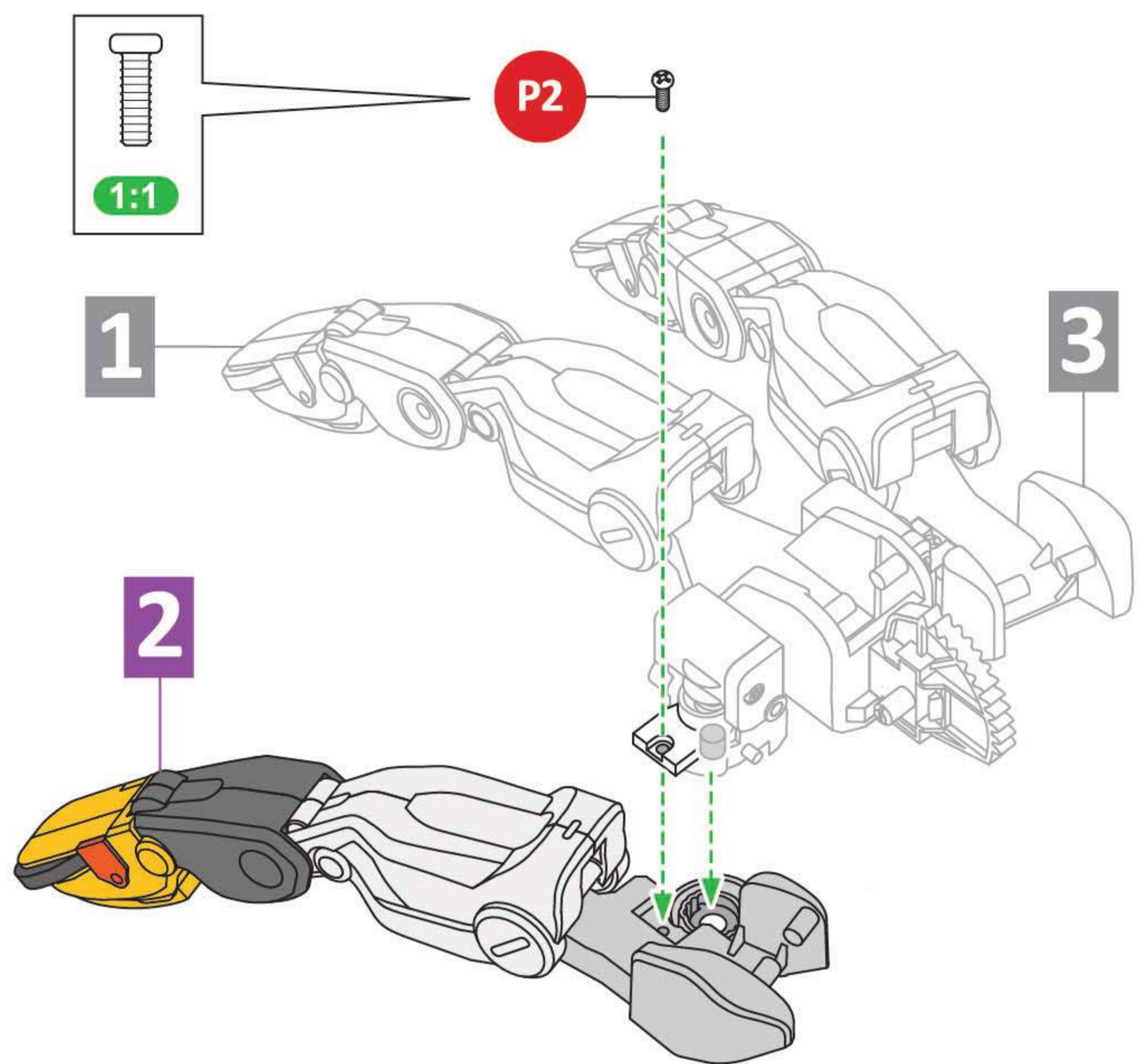
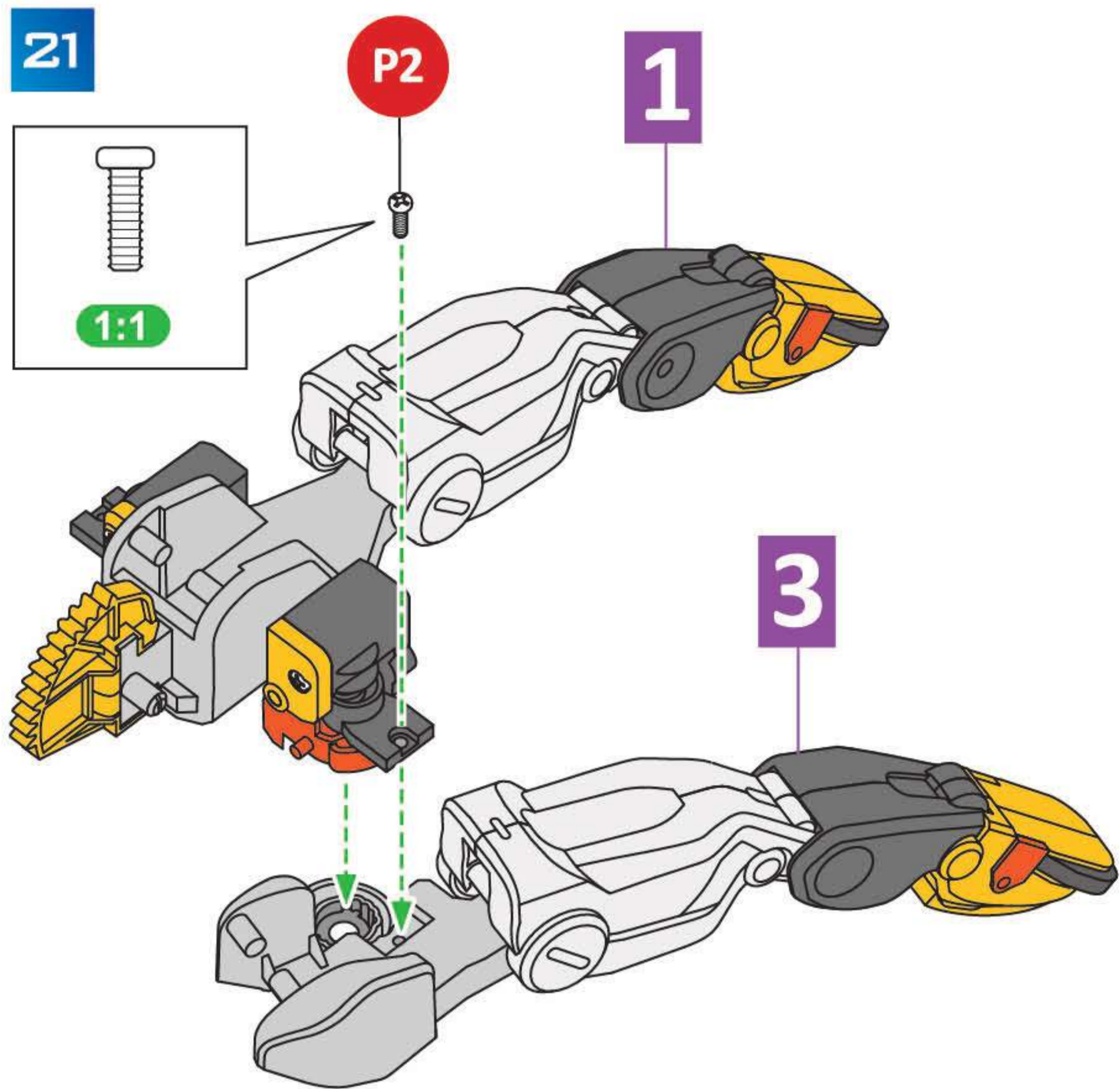


DOIGTS
FINGERS
FINGER
VINGERS
DEDOS
DITA

3

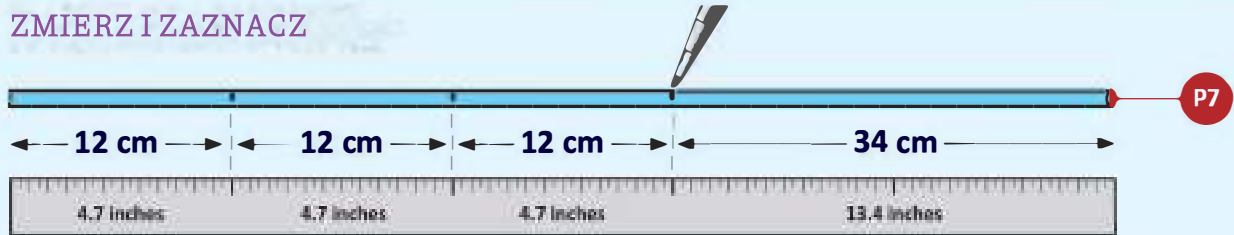




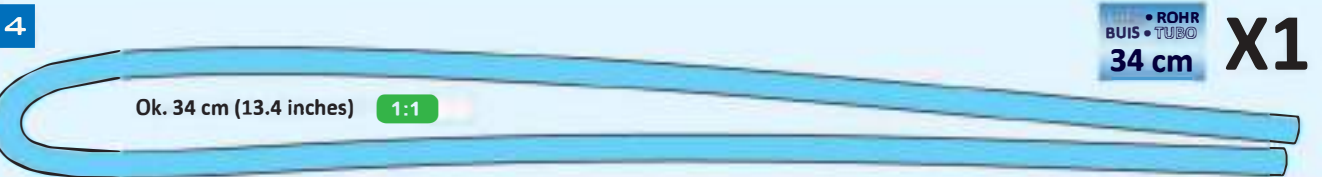
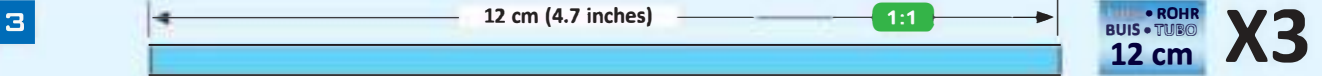
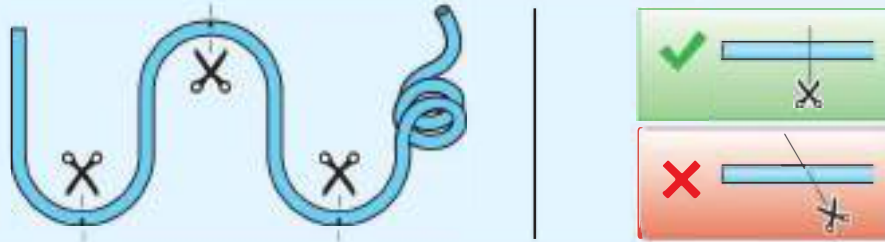
D. SYSTEM HYDRAULICZNY

PRZETNIJ TUBKI

1 ZMIERZ I ZAZNACZ



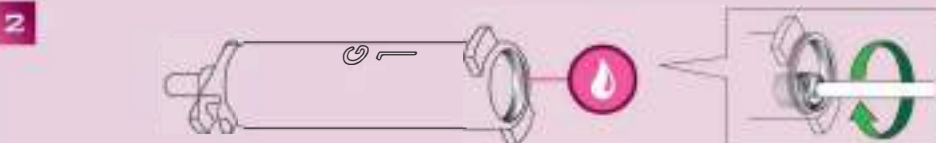
2 PRZETNIJ



APLIKACJA OLEJU



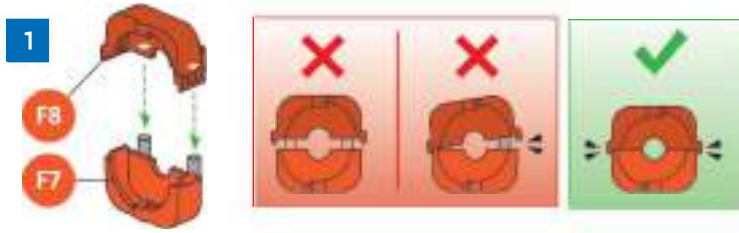
Olej zapobiega tarceniu między częściami.



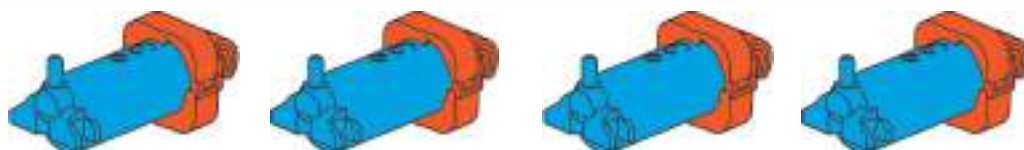
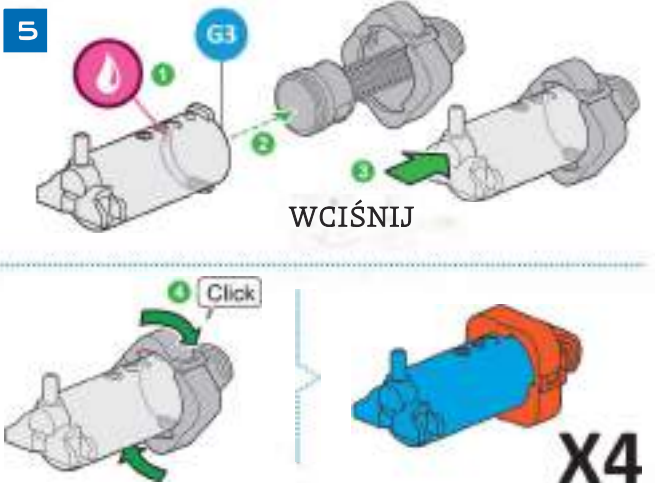
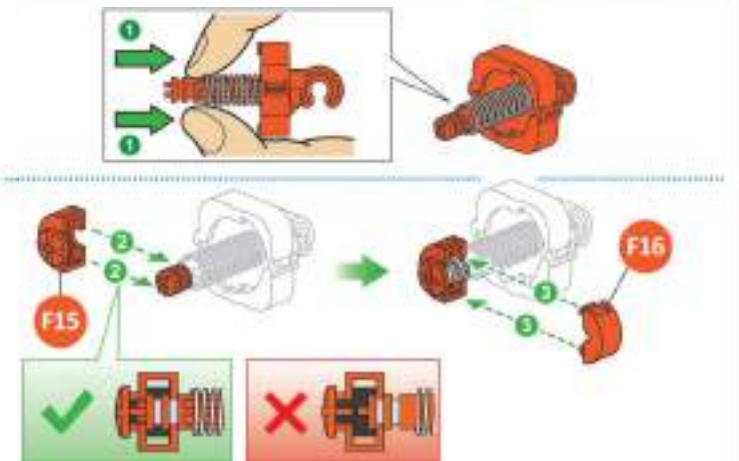
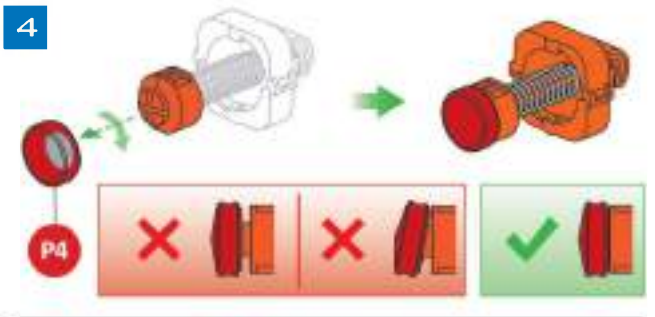
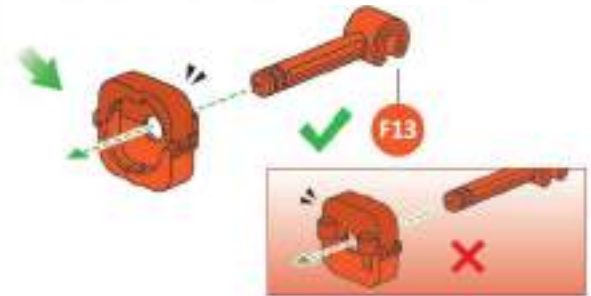
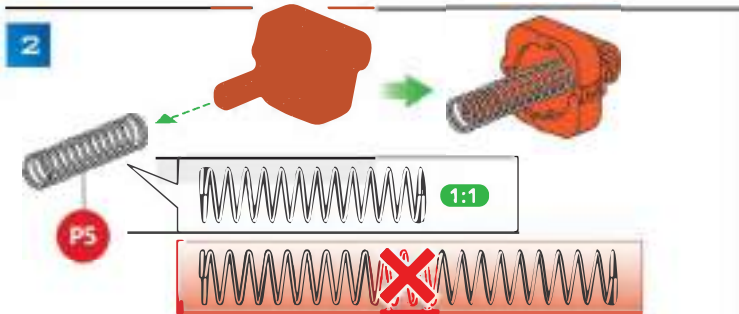
Jego ikona pokazuje, gdzie powinien być zaaplikowany. Nakładaj ostrożnie.

G3

CYLINDER



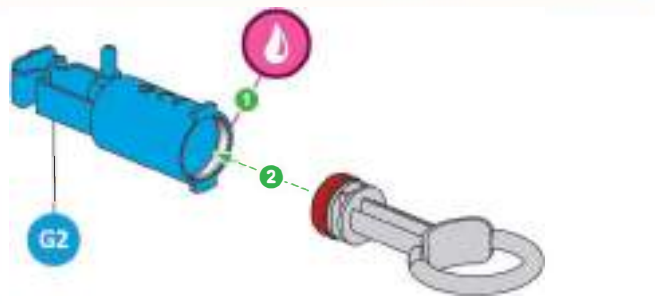
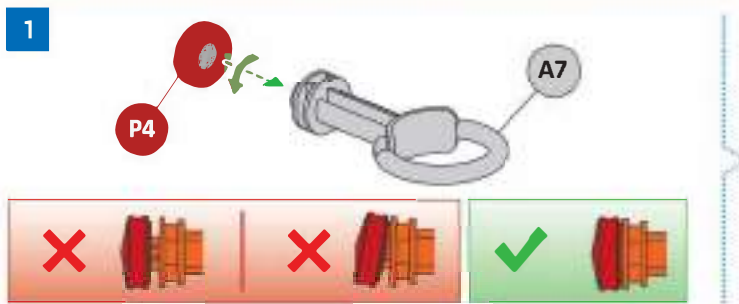
Uważaj, aby dopasować F7 i F8 dobrą stroną!



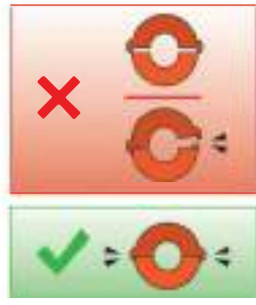
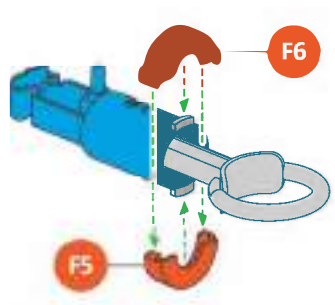
CYLINDRE • CYLINDER
ZYLINDER • CILINDER
CILINDRO • CILINDRO **G3**

G2

CYLINDRE - CYLINDER - ZYLINDER CILINDER - CILINDRO - CILINDRO



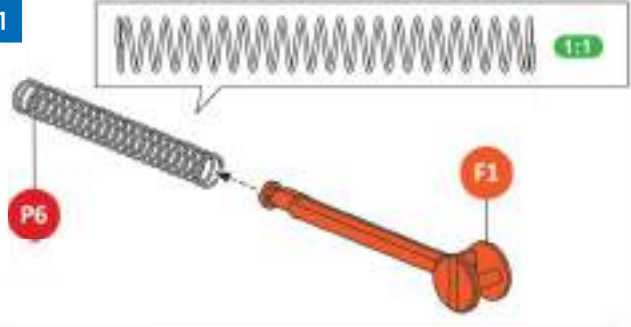
2



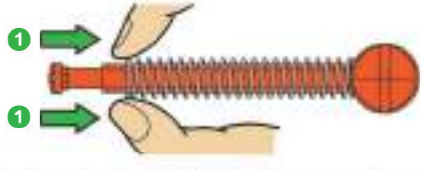
G 1

CYLINDRE - CYLINDER - ZYLINDER
CILINDER - CILINDRO - CILINDRO

1



2



! Wytnij ostrożnie

F3

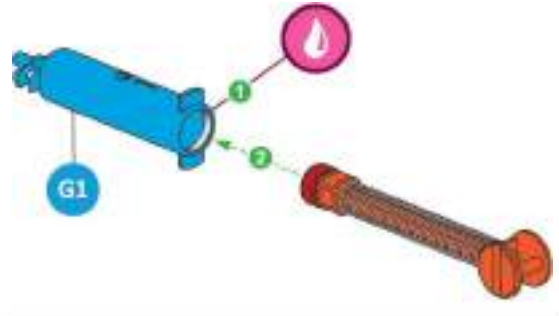
WIDOK Z BOKU

WIDOK Z GÓRY

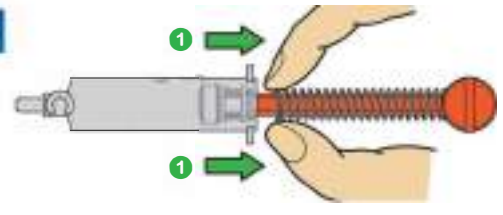
3



4



5




CYLINDRE • CYLINDER ZYLINDER • CILINDER CILINDRO • CILINDRO **G1**



1 **CYLINDER • CYLINDER**
ZYLINDER • CYLINDER
CILINDRO • CILINDRO **G1**

WODA

1 ↑

2 ↓

3 ↑

1 Unieś tłok do góry.

2 Wciśnij tłok w dół.

3 Powtórz krok 1 i 2 kilka razy, aby wypełnić cylinder.

2 ← 12 cm (4.7 inches) → **1:1** →

• ROHR
BUIS • TUBO
12 cm

3

Napełnij cylinder i rurkę.

1 Wciśnij tłok do końca

CYLINDER • CYLINDER
ZYLINDER • CYLINDER
CILINDRO • CILINDRO **G3**

• ROHR
BUIS • TUBO
12 cm

CYLINDER • CYLINDER
ZYLINDER • CYLINDER
CILINDRO • CILINDRO **G1**

WODA

CYLINDER • CYLINDER
ZYLINDER • CYLINDER
CILINDRO • CILINDRO **G1**

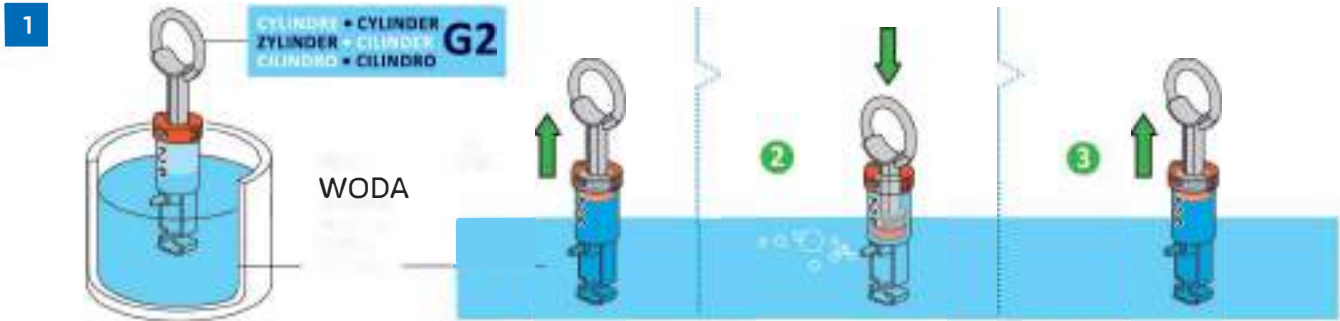
X3

CYLINDER • CYLINDER **G3**

CYLINDER • CYLINDER **G1**

• ROHR
BUIS • TUBO
12 cm

HYDRO. A



1

Unieś tłok z powrotem do góry.

2

Wciśnij tłok w dół.

3

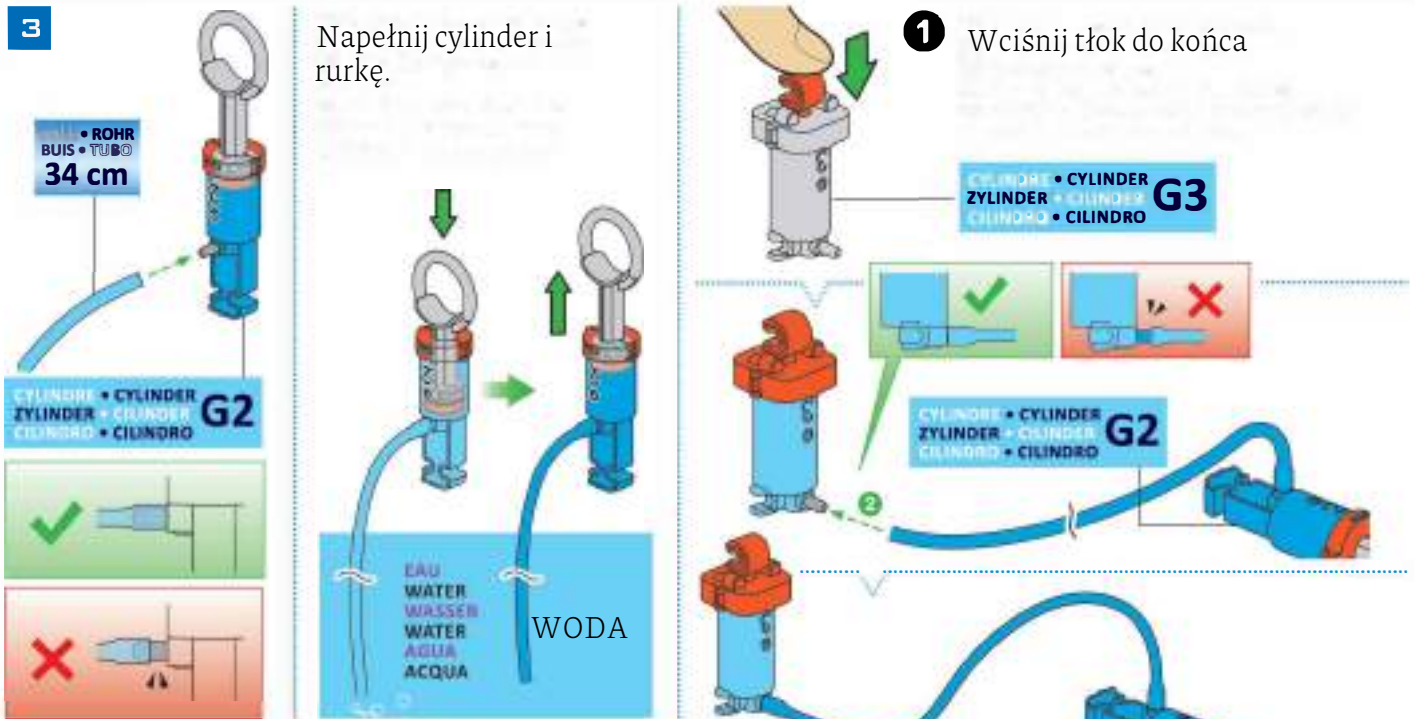
Powtórz krok 1 i 2 kilka razy, aby wypełnić cylinder.



3

Napełnij cylinder i rurkę.

1 Wciśnij tłok do końca



HYDRO. B



TEST

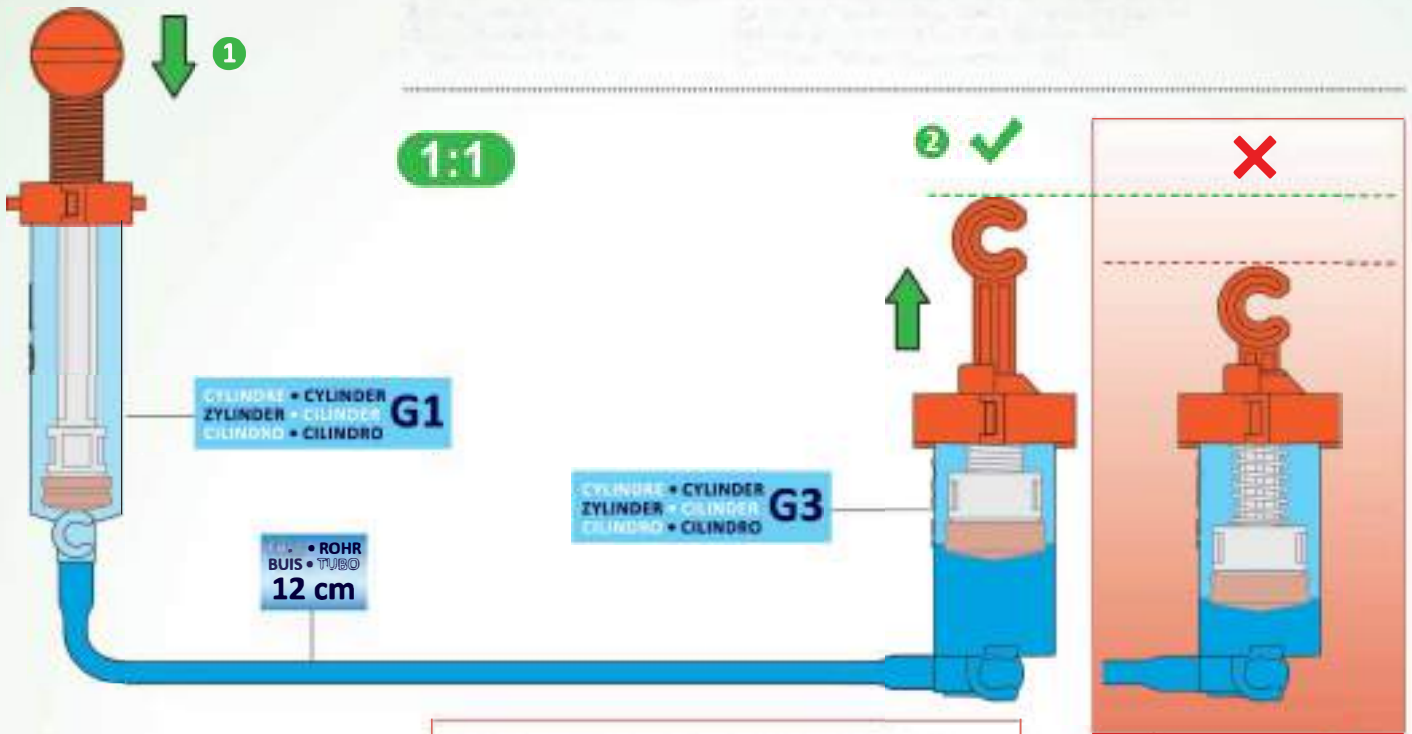
HYDRO. A

1

Wciśnij tłok do końca.

2

Sprawdź poziom tłoka G3



Powtórz kroki od 1 do 3 ze strony 16

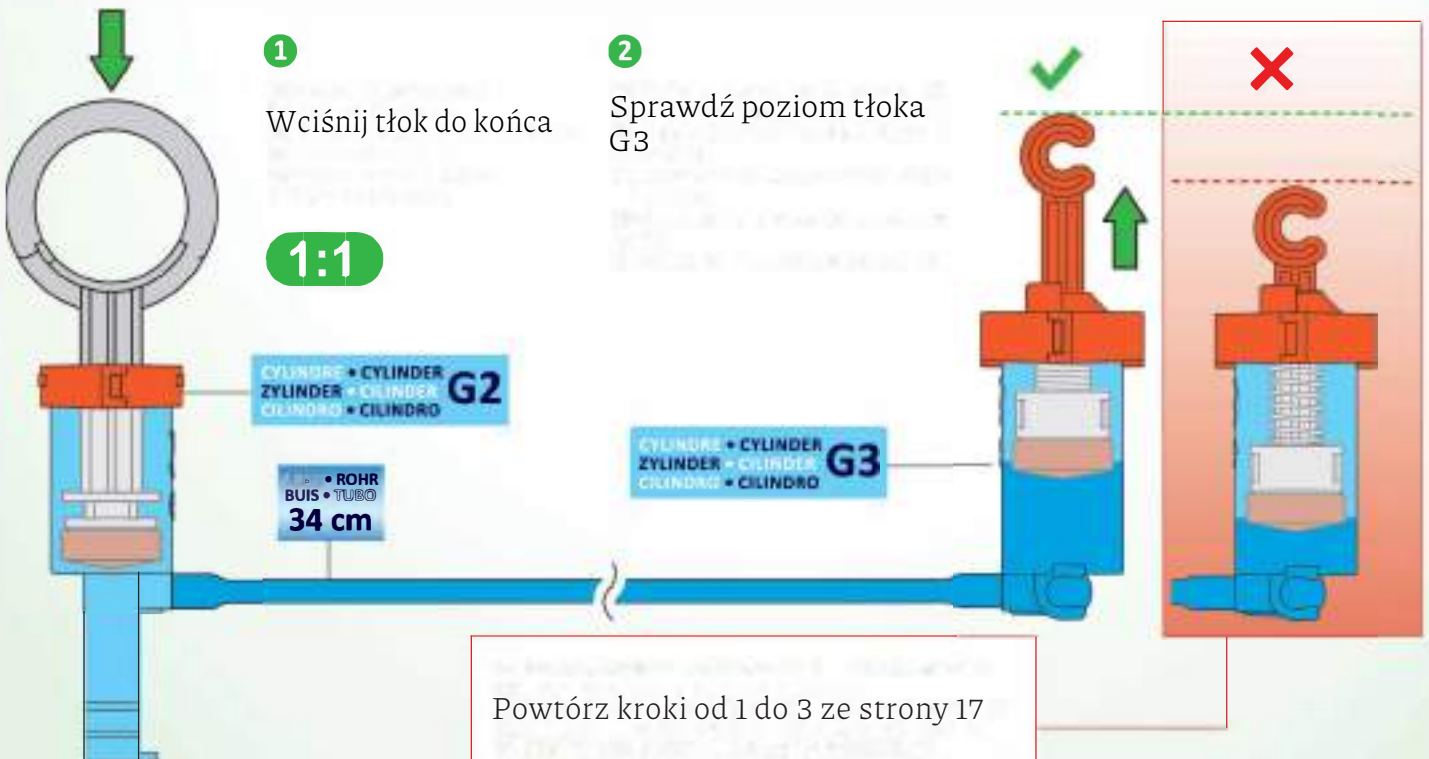
HYDRO. B

1

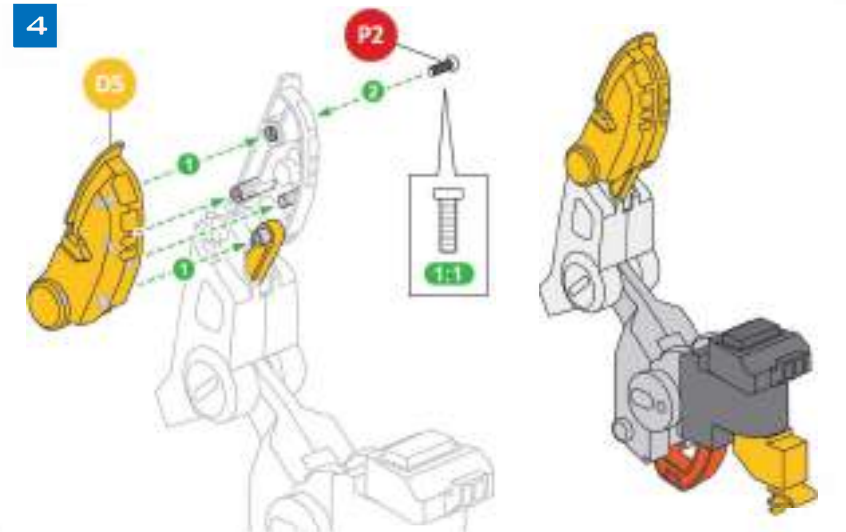
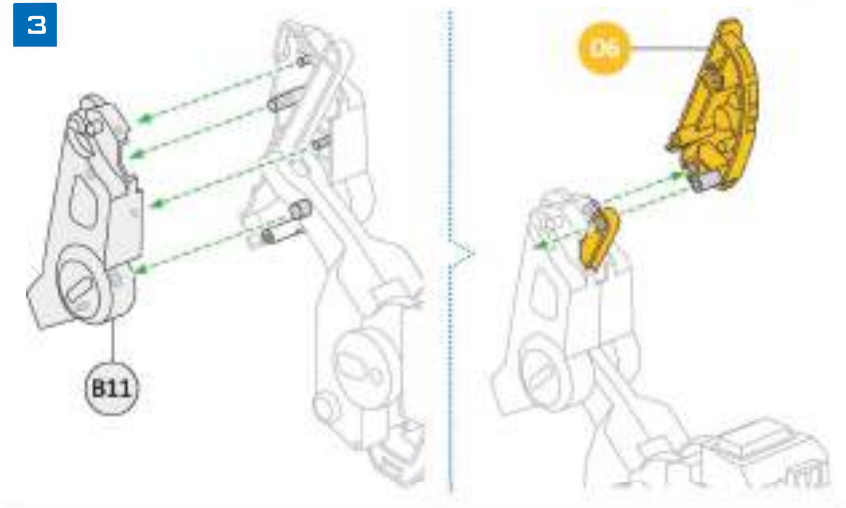
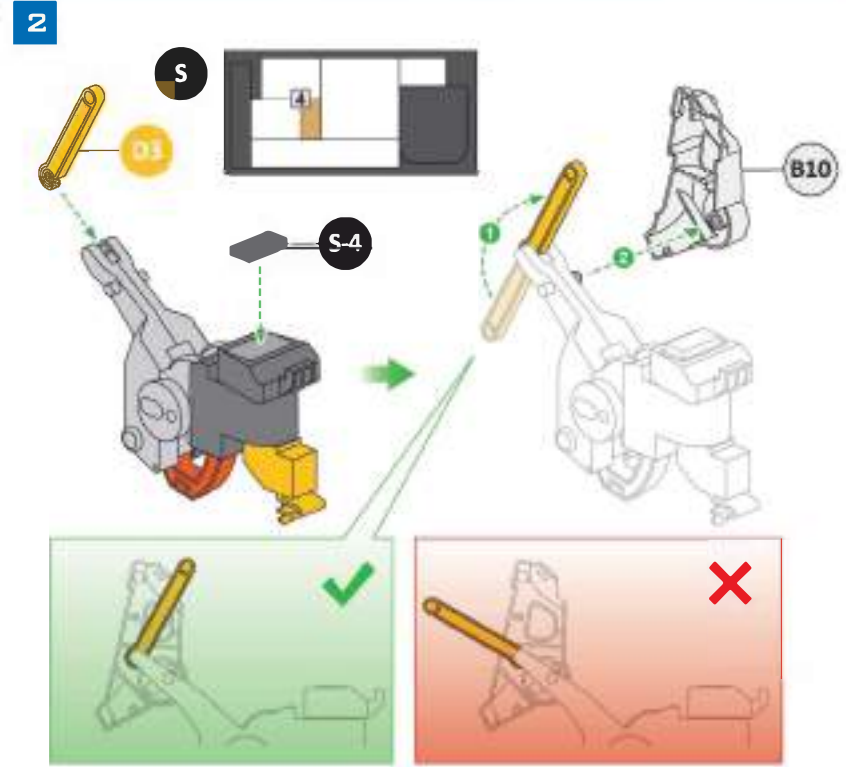
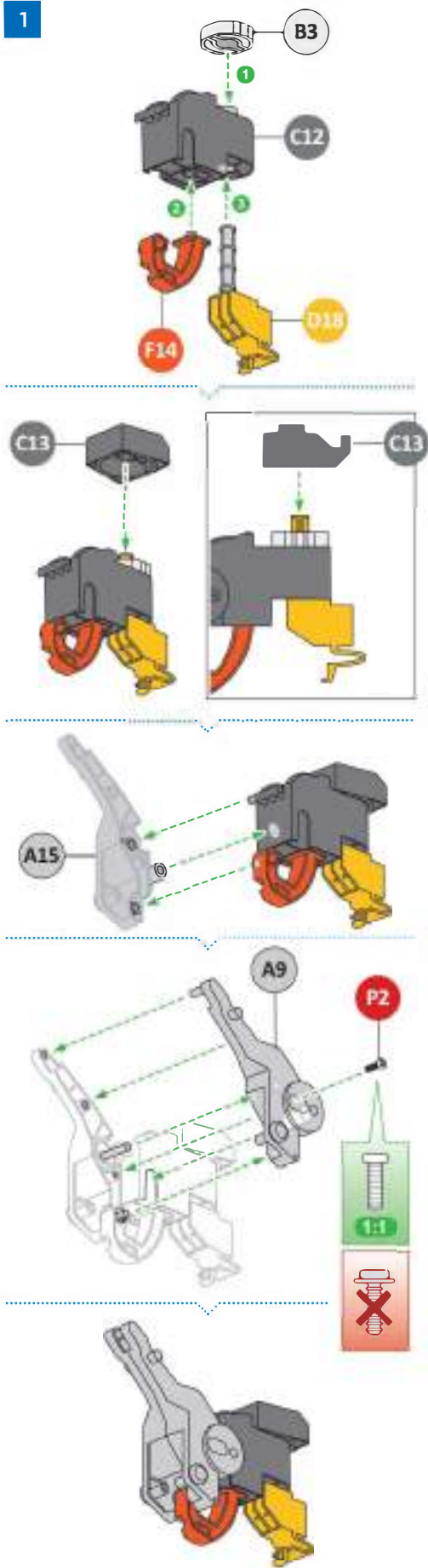
Wciśnij tłok do końca

2

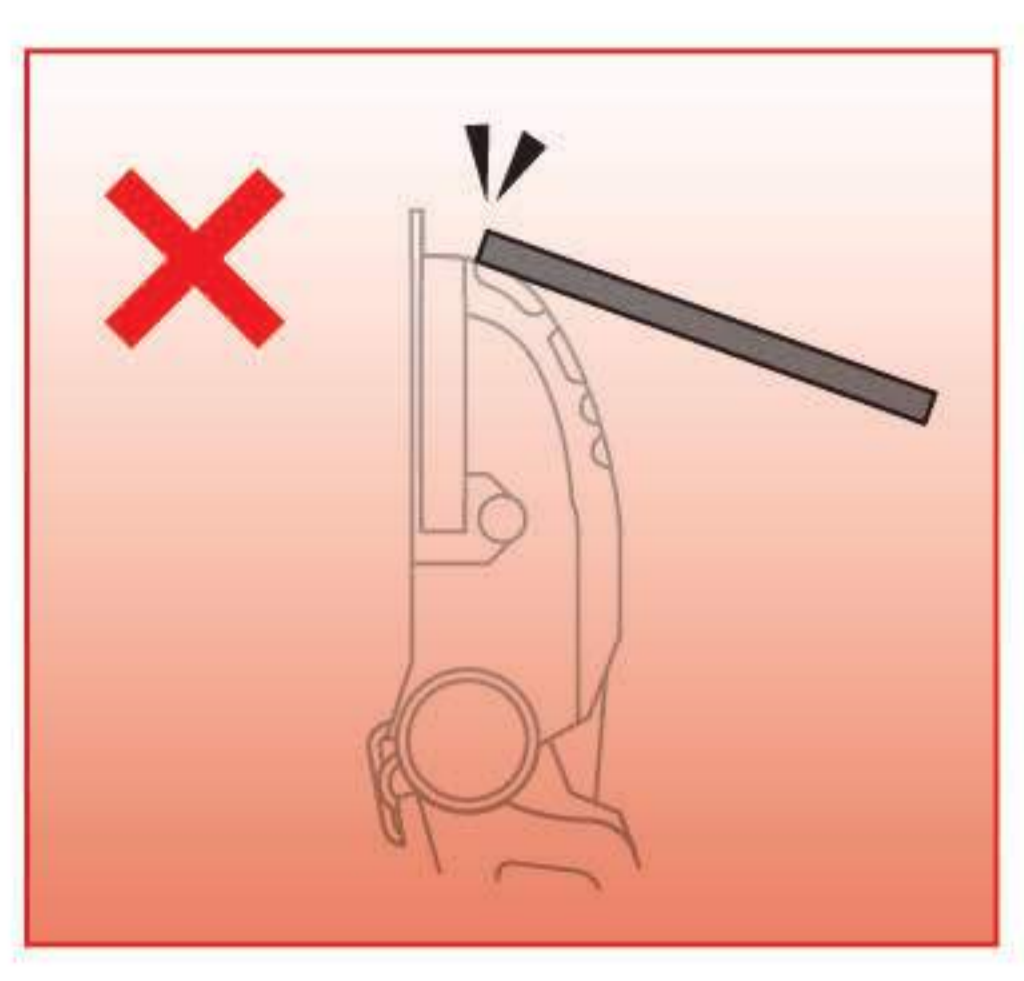
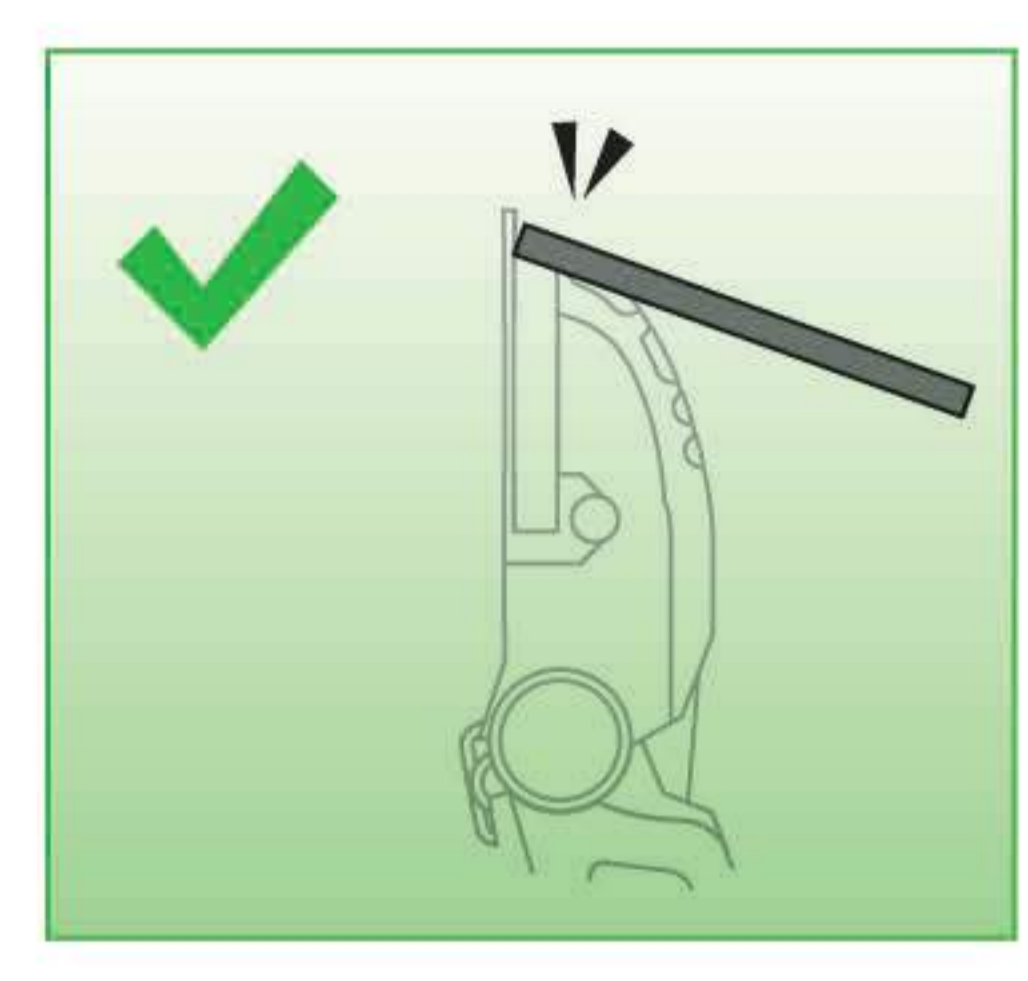
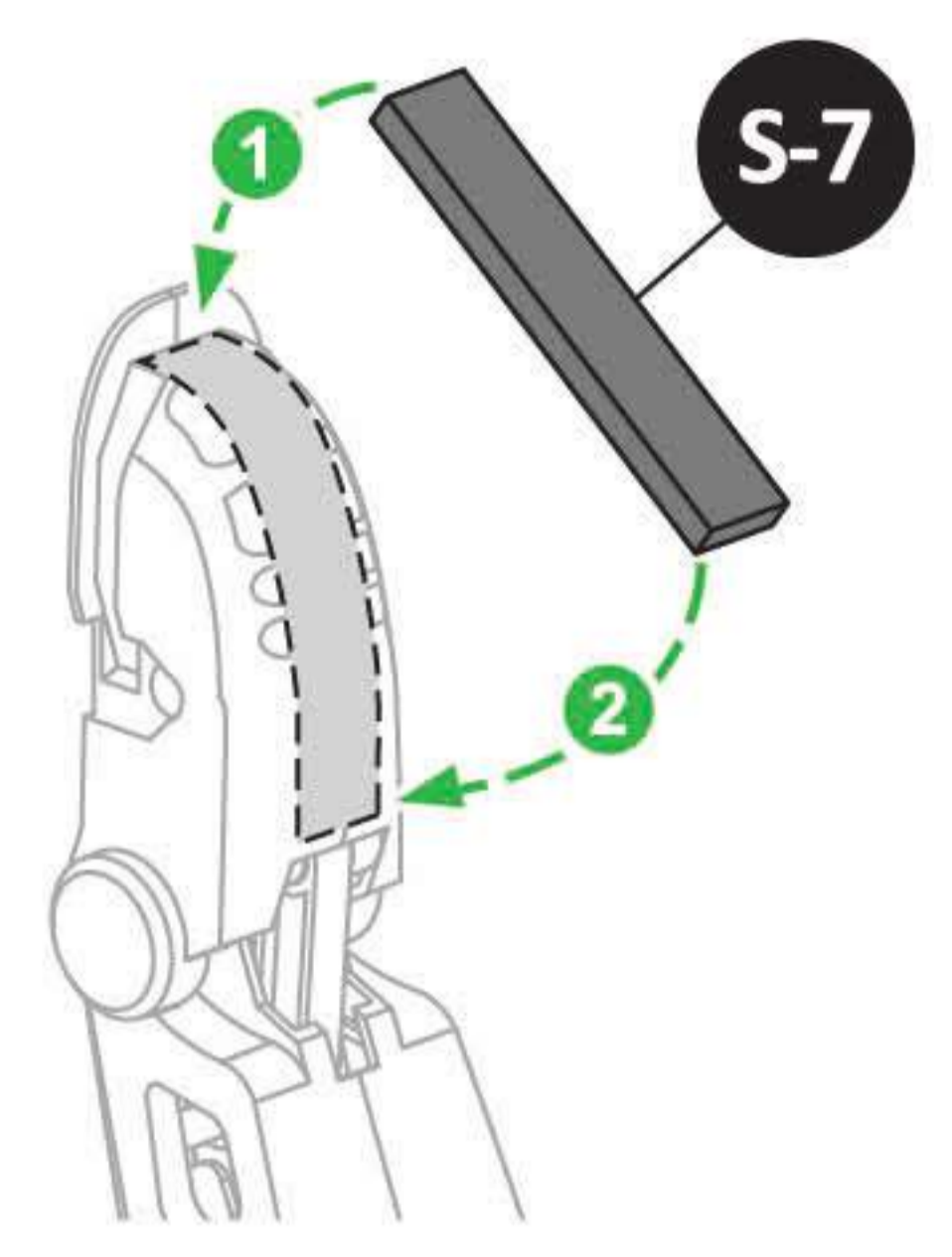
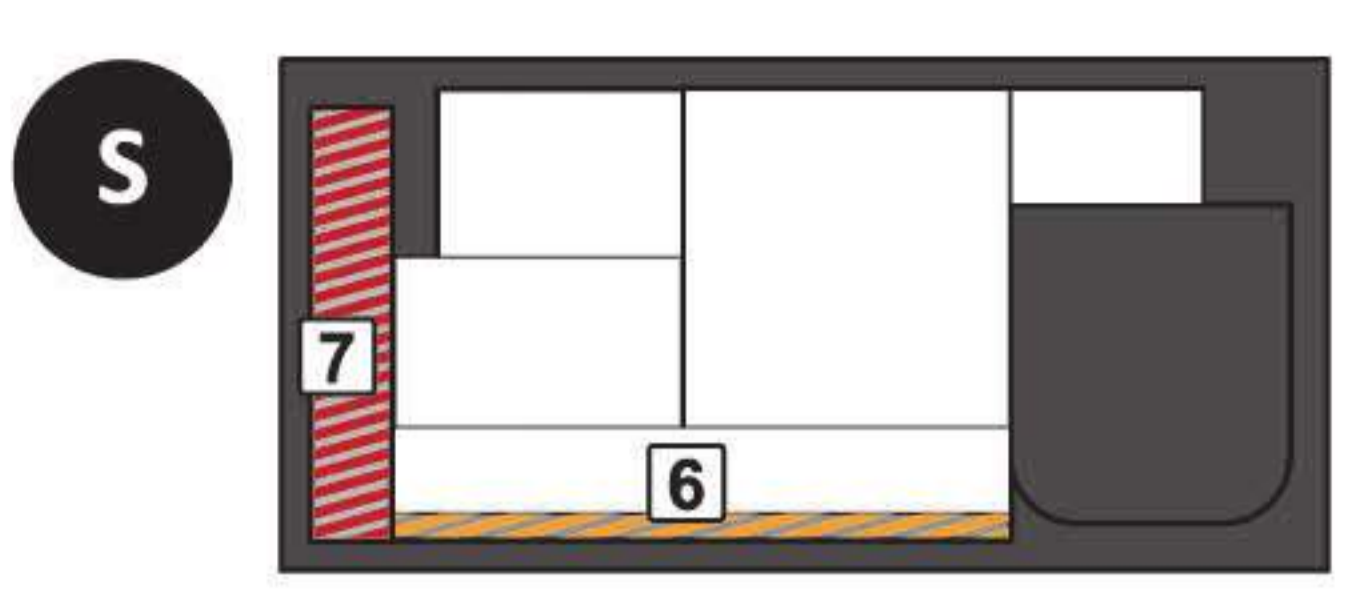
Sprawdź poziom tłoka G3



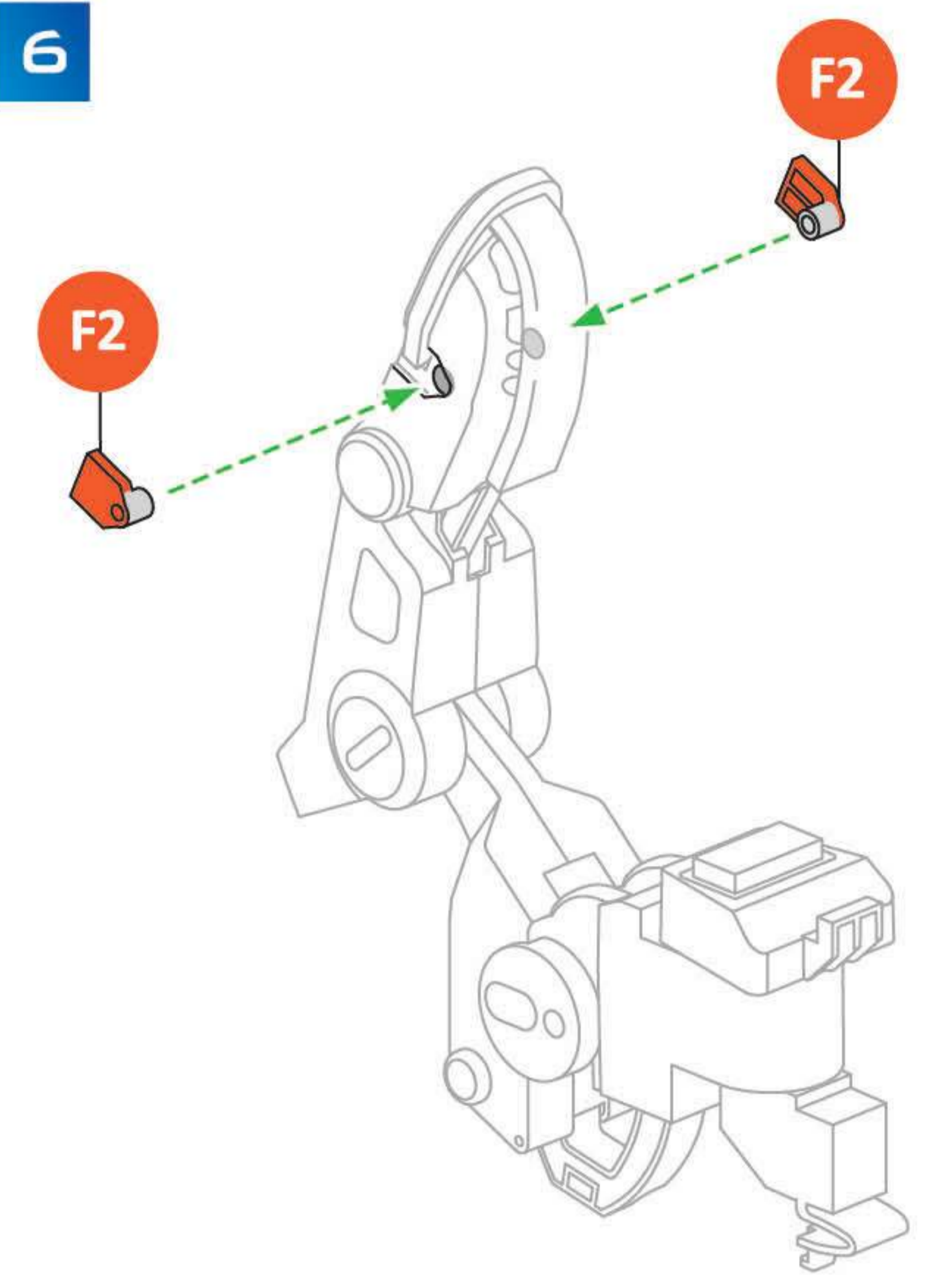
Powtórz kroki od 1 do 3 ze strony 17



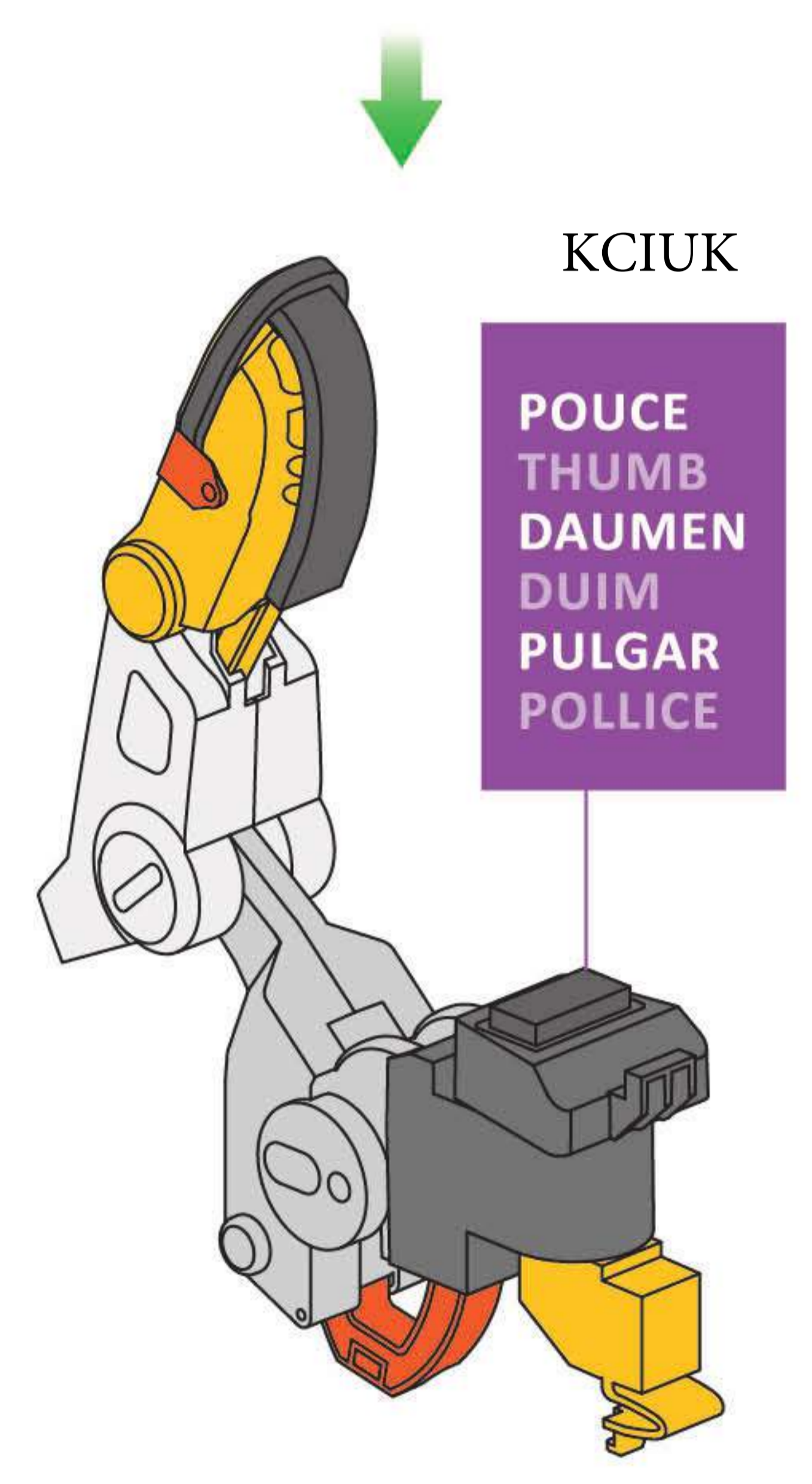
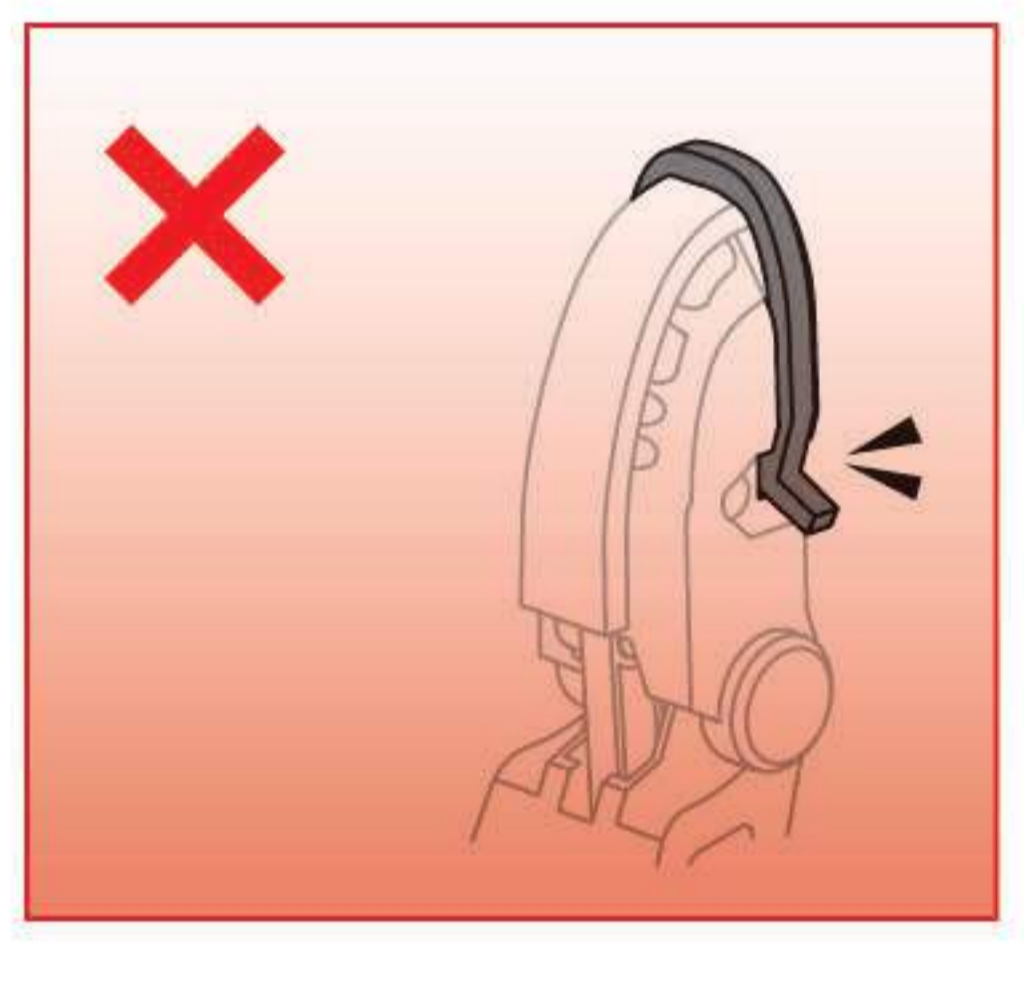
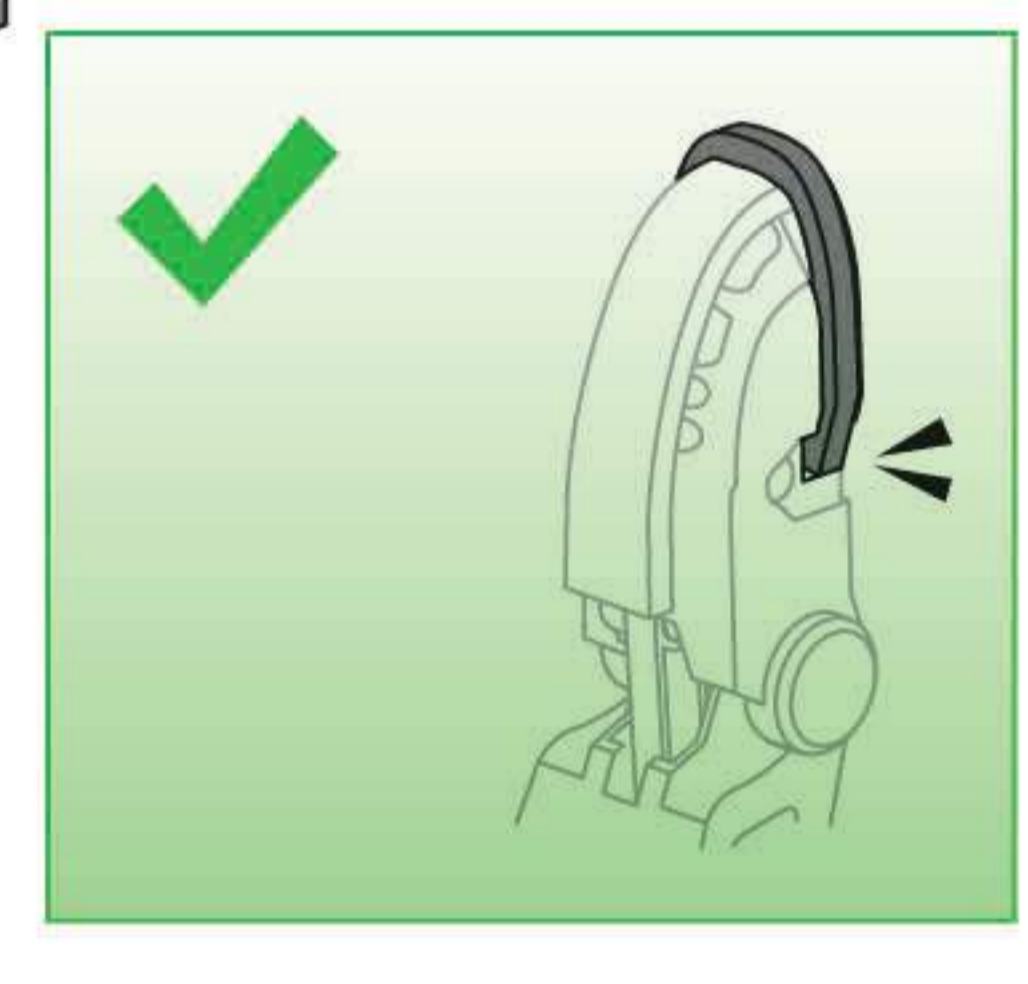
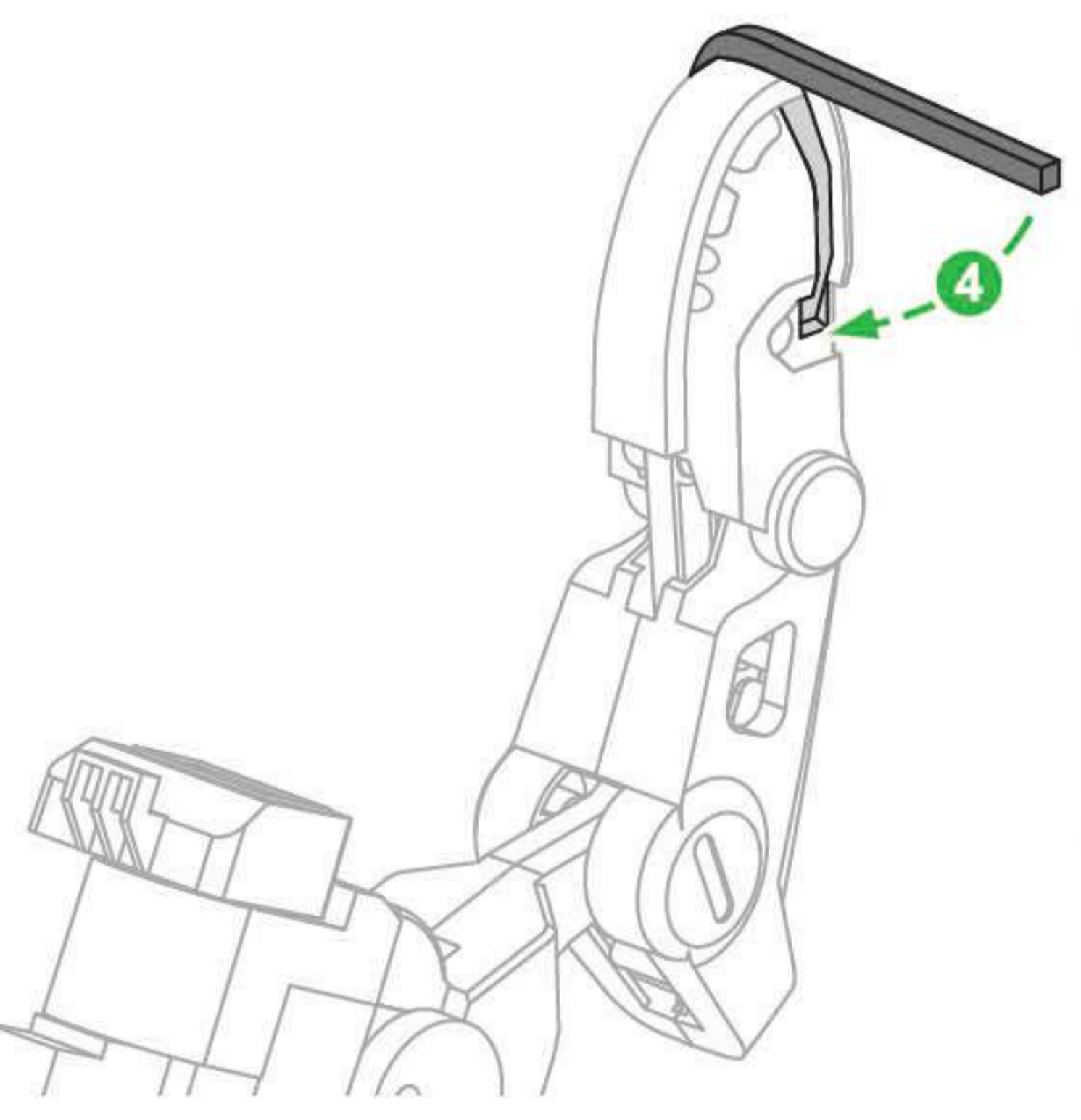
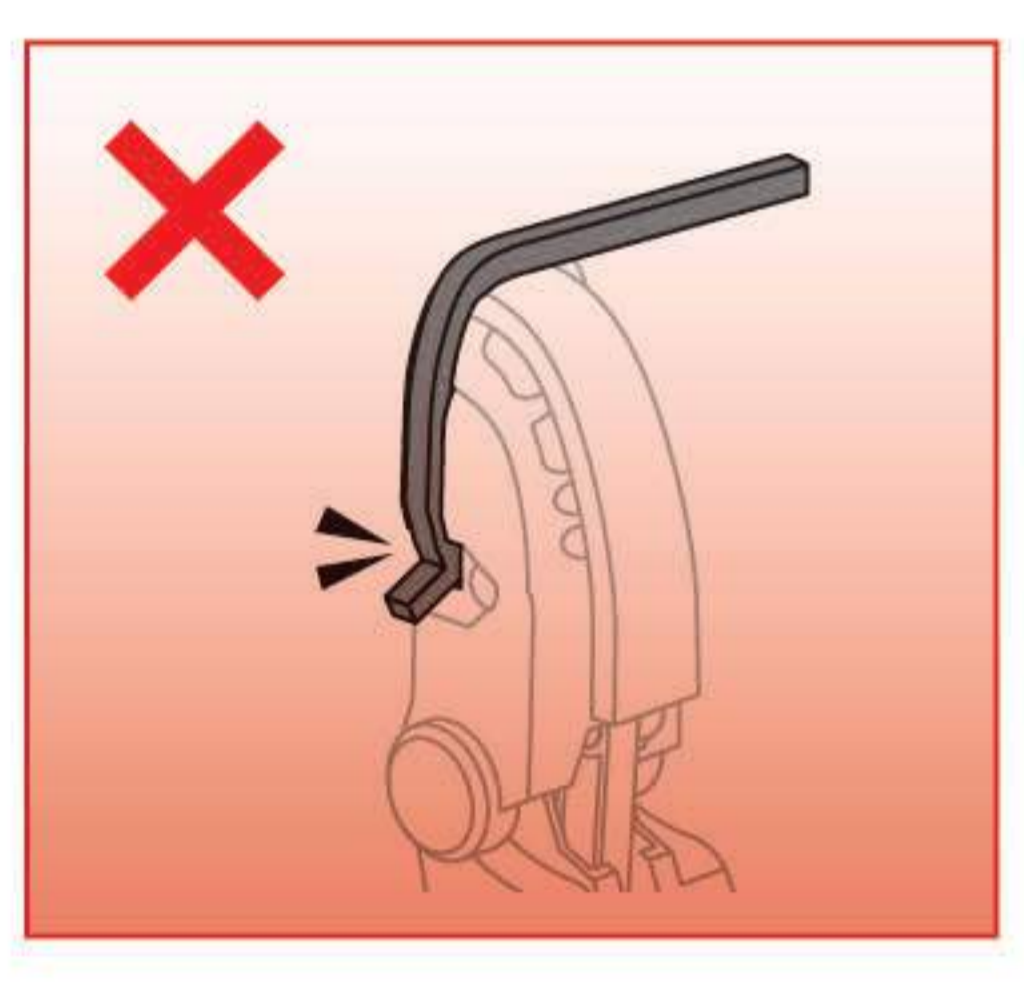
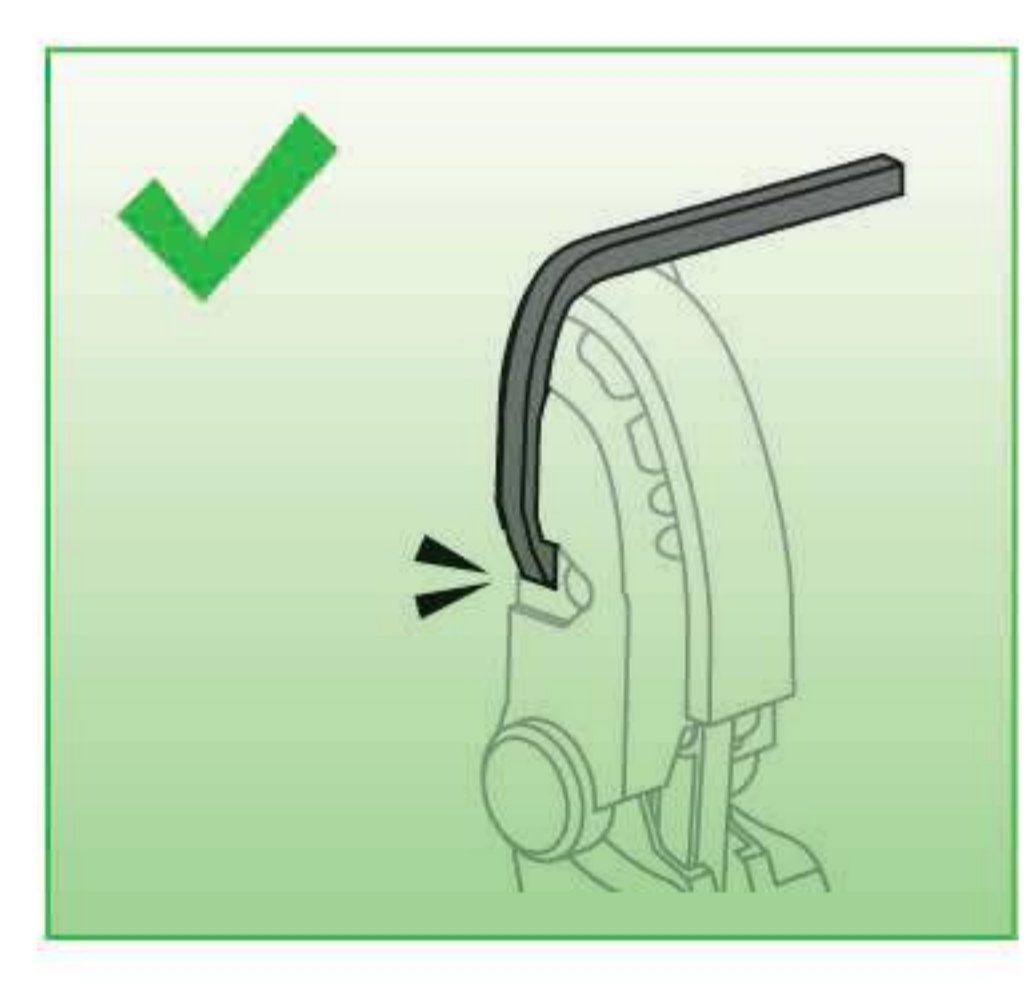
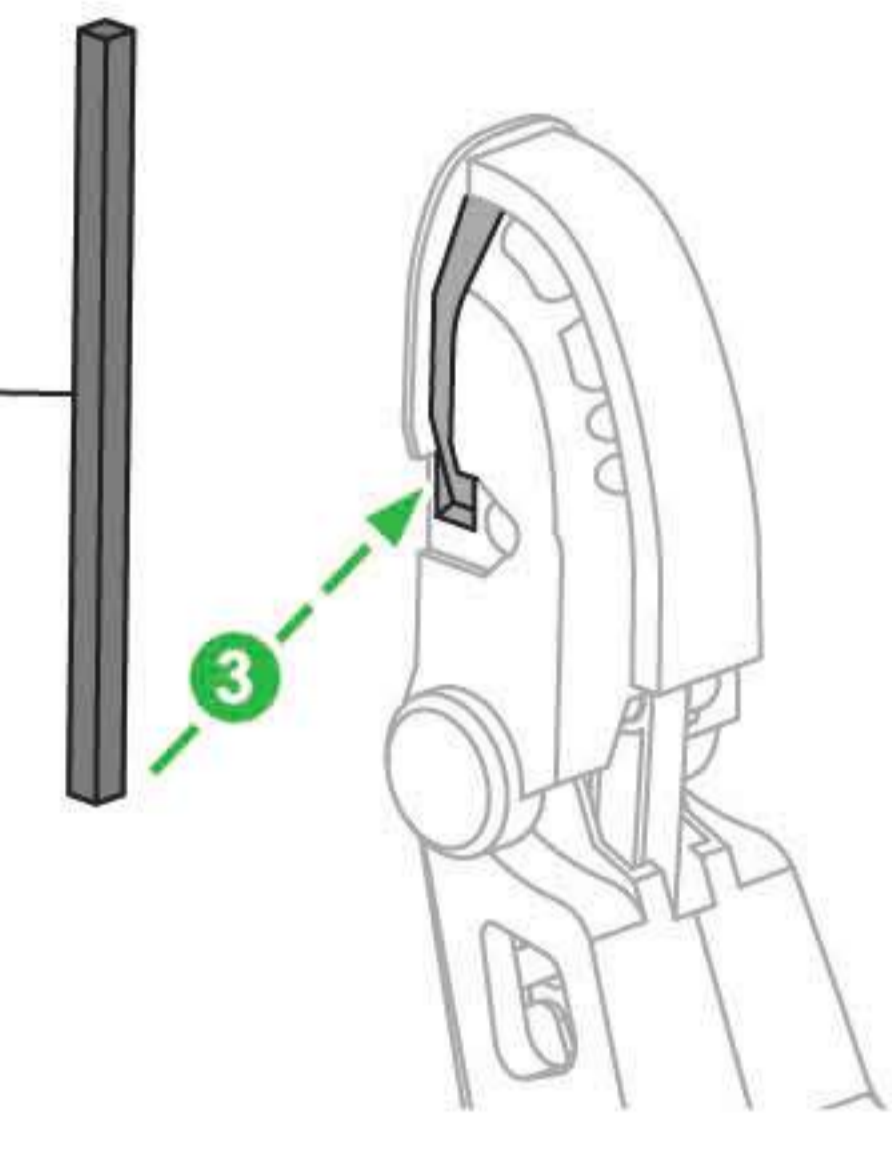
5



6



S-6



7

KCIUK

POUCE
THUMB
DAUMEN
DUM
PULGAR
POLLICE

CYLINDRE • CYLINDER
ZYLINDER • CILINDER
CILINDRO • CILINDRO

G3

